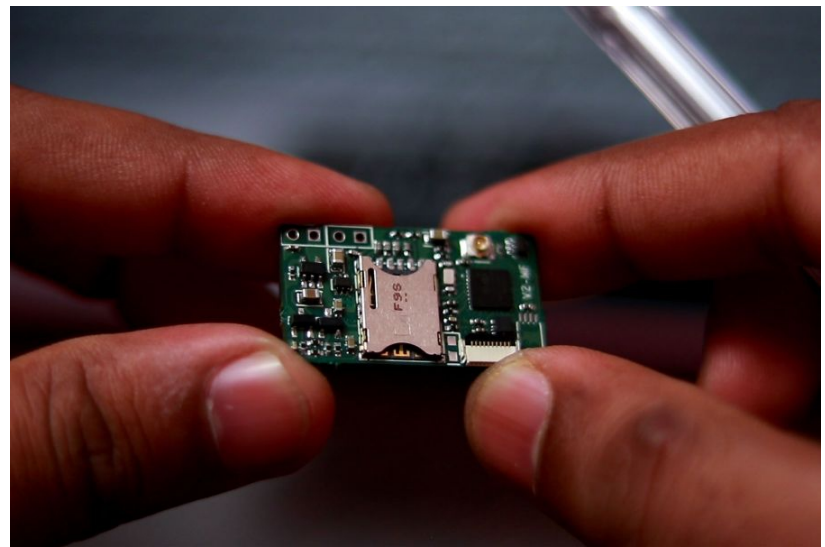
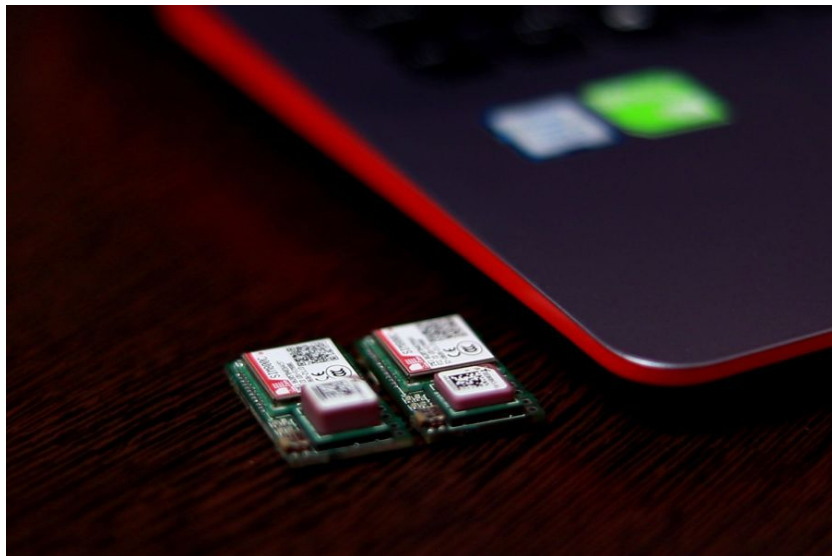


VALTRACK-V2MF GSM GPS TRACKER



Product Overview

VALTRACK-V2-MF is a GSM/GPS based Asset/Personal tracking device. It is small in size, low cost & easy to install.

Features & Benefits

- > VALTRACK-V2MF is a GSM/GPS based Asset/Personal tracking device.
- > It is small in size, low cost & easy to install. Alerts the owner if someone moves the device.
- > Track your elders and children for 4 days on a single charge using SMS on 400mAh battery.
- > Listen to what is happening near the device using the Auto answer feature.
- > Track your Car, PET , Children or Elders location on map using SMS or Cloud based tracking.

VALTRACK-V2MF GSM GPS TRACKER

VALTRACK-V2MF

Technical Specifications

Operating Voltage

3.7V Battery

Model No.

VALTRACK-V2MF

Inputs

-NA-

Outputs

-NA-

Operating Modes

- > HTTP
- > SMS
- > MQTT / TCP

Configuration Mode

Bluetooth 3.0 (SPP protocol)

Dimensions

31mm * 17mm * 6mm

Battery

3.7V Li-ion / Li-Po

GSM

SIM800C Quad band 2G module

Processor

STM32L051K8U6 ARM Cortex-M0 32MHz

Charging Interface

> 5V DC on 2.54mm Header

Motion Sensor

12-bit 3-axis Accelerometer

Antenna

- > U.FL (GSM)
- > Inbuilt Antenna (GPS / GNSS)

Memory

1-Mbit EEPROM

Connectivity

- > Bluetooth
- > GPRS

Debug Interface

SWD Debug Interface

GPS

Telit SE868K3L GNSS / SE868K7L GPS Compact size

Note: Enclosure with notch lid ships standard

Disclaim

Your use of this site is at your risk. The information, materials and services provided on or through this web site are provided "as is" without any warranties of any kind including warranties of merchantability, fitness for a particular purpose, or non-infringement of intellectual property. Neither Valetron Systems Private Limited nor any of their affiliates warrant the accuracy or completeness of the information, materials or services provided on or through this web site.